


CHINTAMANI RESIDENCY




TM CONSTRUCTIONS



Welcome to **Chinatamani Residency**, where affordable luxury meets contemporary living in the heart of Satyabhampur. Situated amidst the serene landscapes and bustling urban life, Chinatamani Residency offers a harmonious blend of modern amenities and comfort, catering to those seeking a refined lifestyle without compromising on affordability.

Affordable
Luxury
Living

RERA NO. - RP/19/2023/01070

An aerial night-time photograph of a modern, multi-story apartment complex. The building features a light-colored facade with numerous balconies, many of which are illuminated from within. A large, rectangular swimming pool is visible on the right side of the building, also lit up. The complex is surrounded by dense, dark green trees and foliage. In the background, a road with light trails from cars is visible, and another building can be seen on the left. The overall atmosphere is serene and luxurious.

"Welcome to a community where upscale living is accessible to all, where your comfort and satisfaction are our top priorities."

Luxury made affordable, luxury made yours.

Dive into Luxury



Immerse yourself in the serenity of our pristine pool, nestled amidst verdant surroundings. Enjoy exclusive access to this tranquil haven, perfect for a refreshing dip or a relaxing swim. Experience the ultimate in relaxation as you lounge by the water's edge, soaking up the sun's warmth.

Discover your personal oasis at Chintamani Residency, where luxury meets tranquility.

*Paradise
Awaits.*

Community Hall

Discover our dynamic community hall, a hub where residents come together for gatherings, events, and shared experiences. With modern amenities, versatile event spaces, and ample seating, it's the perfect venue for any occasion. From birthday parties to yoga classes, our community hall fosters connections and creates lasting memories.

Join us in celebrating community spirit and creating meaningful connections in our vibrant gathering space.





Welcome to our state-of-the-art multi gym, where fitness meets convenience in the heart of our residential community. Our meticulously designed amenities include a fully equipped multi gym, providing residents with a comprehensive fitness experience without ever having to leave the comfort of home.

Say goodbye to crowded public gyms and hello to the convenience of having everything you need for a fulfilling workout just steps away from your doorstep.

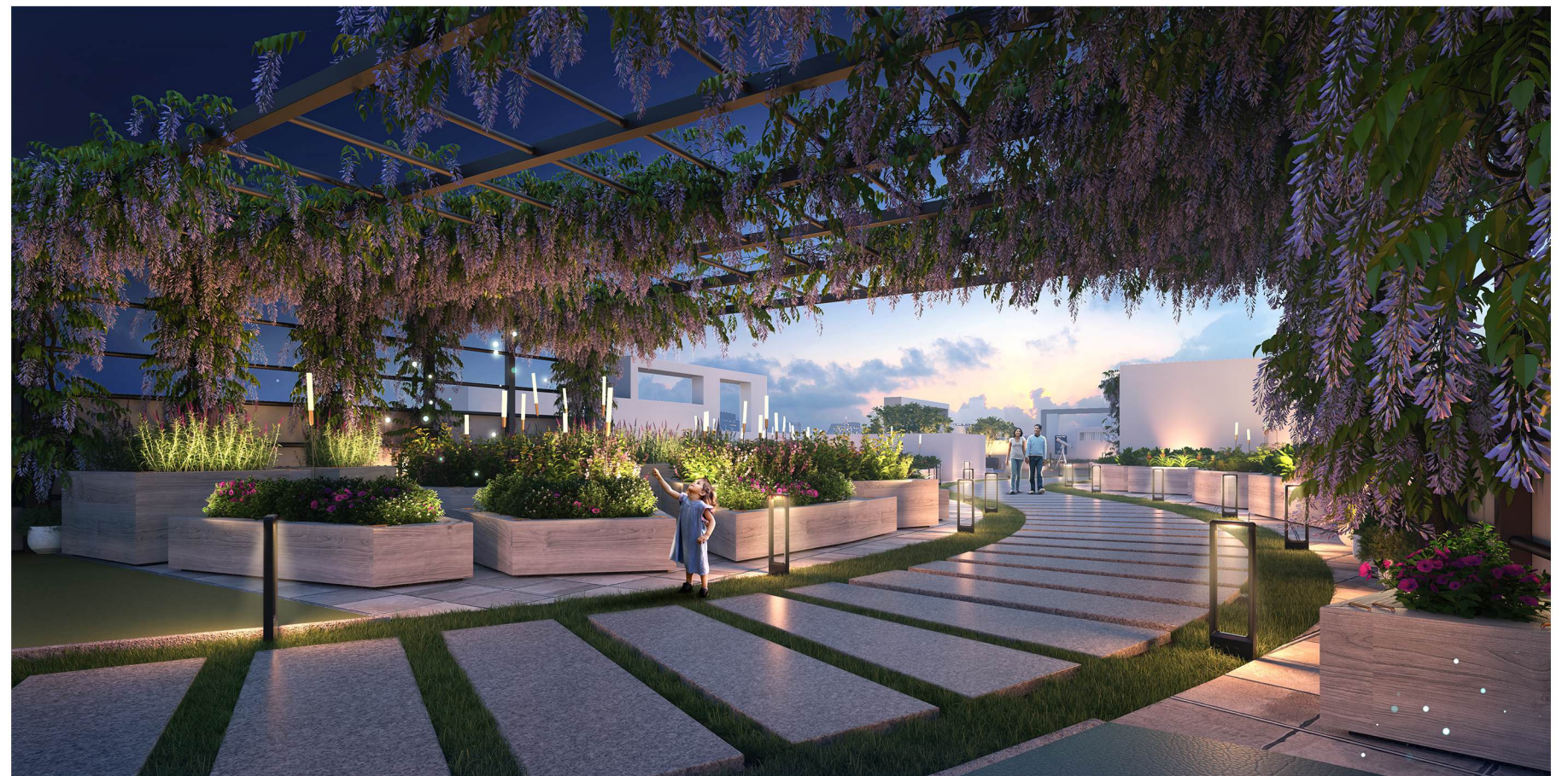
Multi Gym

Escape to your private terrace garden oasis – where ,
Nature meets Luxury,
right at home.



In the silence of nature, the mind becomes still, and the heart opens wide, inviting the beauty of the landscape to become a mirror for the soul's deepest truths.

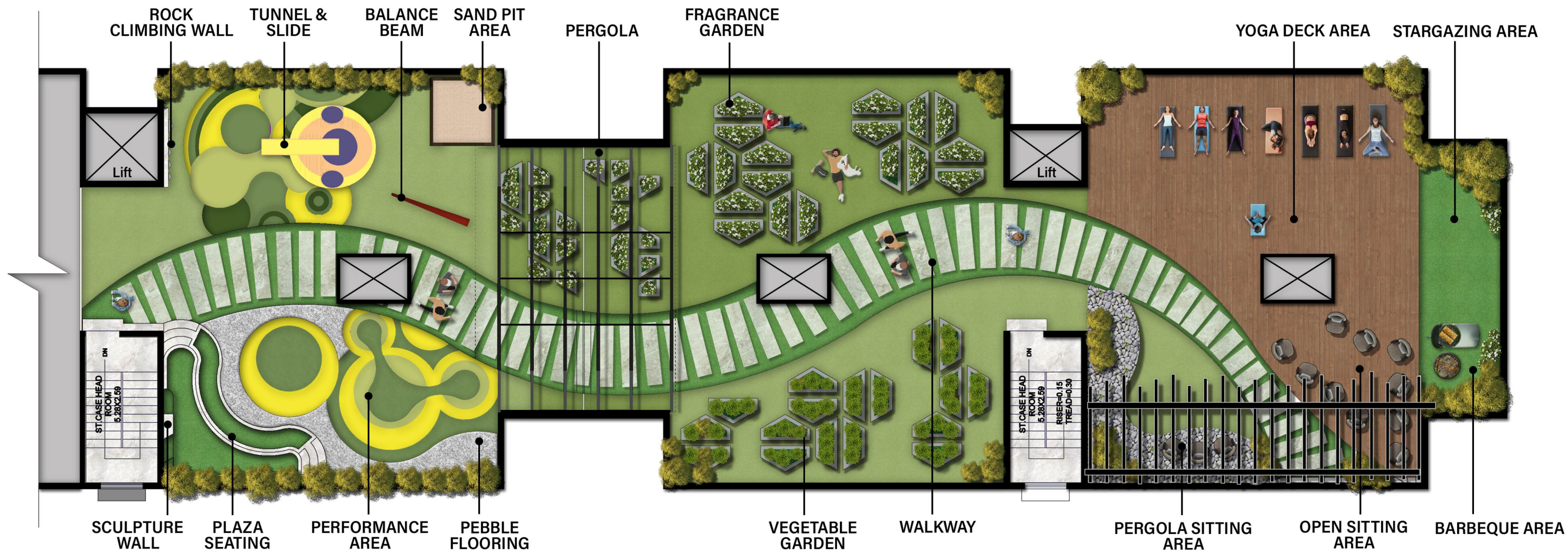
Elevate
your living
experience.





Discover the tranquil beauty of urban landscapes from your own private terrace garden sanctuary, where the city skyline becomes a backdrop to your personal paradise.





Terrace

LANDSCAPE PLAN

EV CHARGING POINT

Exclusively for our residents, we provide dedicated EV charging points. Rest assured knowing that you can conveniently charge your electric vehicle right on your property as we embrace the future of transportation.

SOLAR POWERED COMMON AREAS

Harnessing the power of the sun, our society is equipped with state-of-the-art solar panels to provide clean, renewable energy for common areas. We provide a 10 kV solar power supply. By choosing solar, you're not only reducing your carbon footprint but also lowering your utility bill.

24x7 POWER BACKUP

A diesel generator that can provide 24x7 power backup for common areas, even during a massive power outage.

360 DEGREE CCTV SURVEILLANCE

Your safety and security are our top priorities. That's why there's CCTV surveillance throughout our apartment community.



Amenities

STRETCHER LIFT UP TO TERRACE

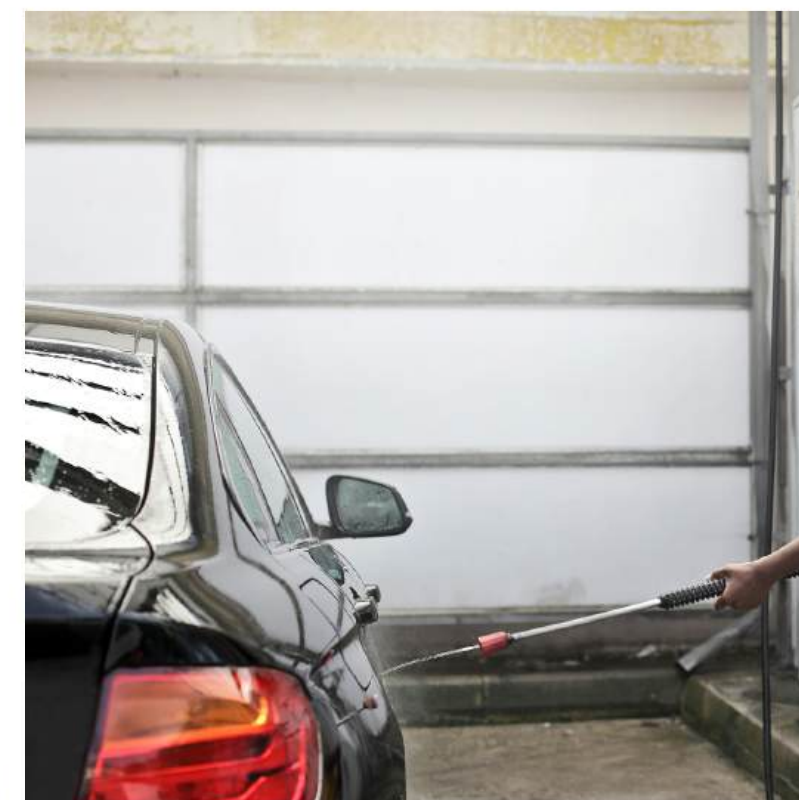
Offering generous space to accommodate individuals and bulky items alike up to terrace floor, our stretcher lift emphasizes comfort and practicality. Bid farewell to cramped confines and welcome a journey of smoothness and spaciousness.

CAR WASH BAY

Located conveniently on-site, our car wash bay is here to keep your vehicles sparkling clean without the hassle of leaving home.

PIPELINE GAS

Experience the convenience and efficiency of pipeline gas for cooking in your new home! Say goodbye to the hassle of changing Cylinders or worrying about running out of fuel mid-meal. With pipeline gas, you can enjoy uninterrupted cooking experiences every day.



Amenities

SPECIFICATIONS

KITCHEN

Granite cooking platform, premium ceramic tiles with a dado up to 3 feet height over the platform with stainless steel kitchen sink.

ELECTRICAL

Concealed copper wiring with provision for light point, AC, TV & Telephone and premium modular switches.

TOILET/BATH

Shower & Basin fitting of Jaquar/Kohler/ Parryware or equivalent make, Sanitary Fixtures of Cera/Aqua/ Roca/Parryware or equivalent make and Installation of Exhaust fan in all toilets.

DOORS

All main doors will be moulded Solid flush doors with stainless steel soft closer hinges and Godrej /equivalent make mortice lock with view finder.



*Images are for illustrative purposes only.

SPECIFICATIONS

STRUCTURE

Earthquake-resistant RCC frame structure. RCC of M35 grade concrete

CEMENT

OCL/ Ultratech/Ramco/Jsw//NOVOCO or Equivalent.

STEEL

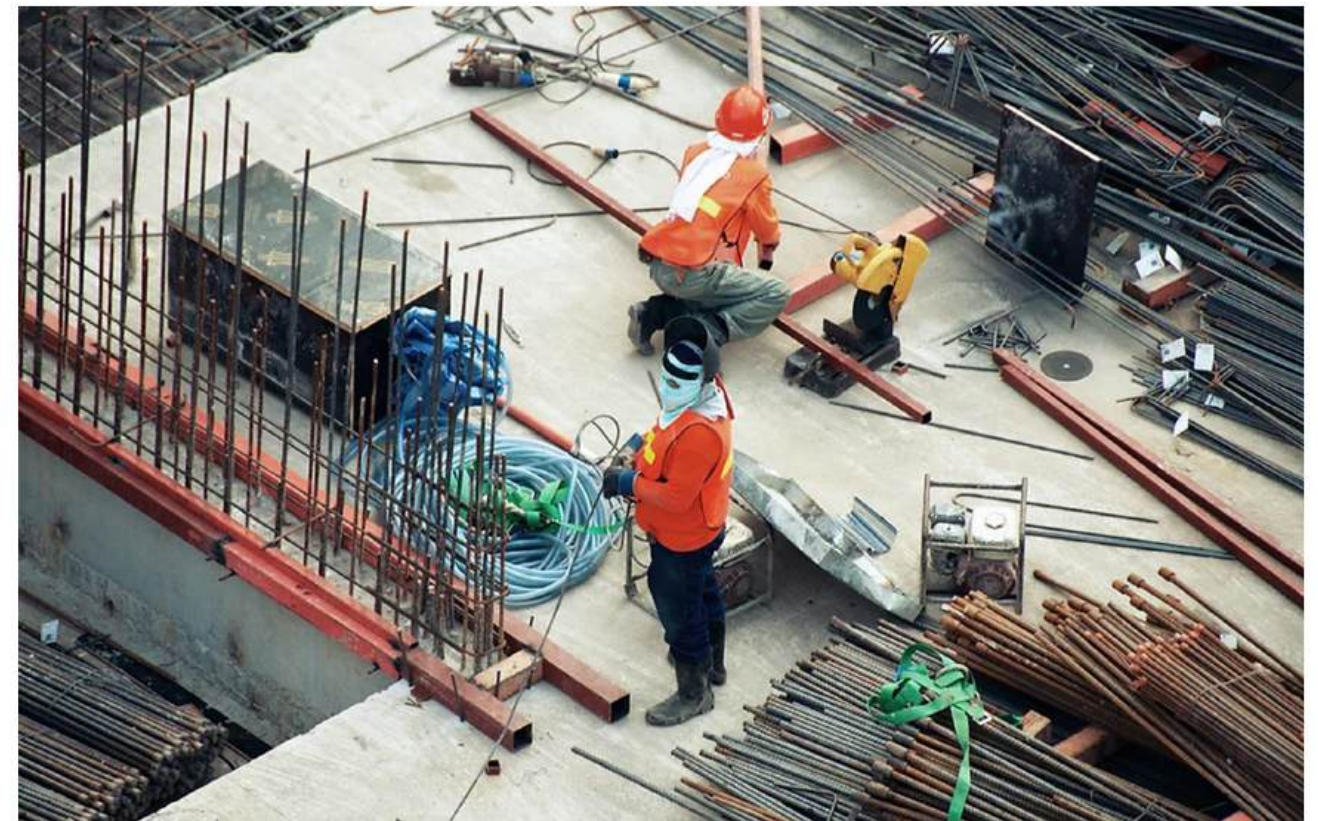
Fe550D of Tata / Sail/Vizag/Jspl/jsw/ Shyam or Equivalent.

FLOORING

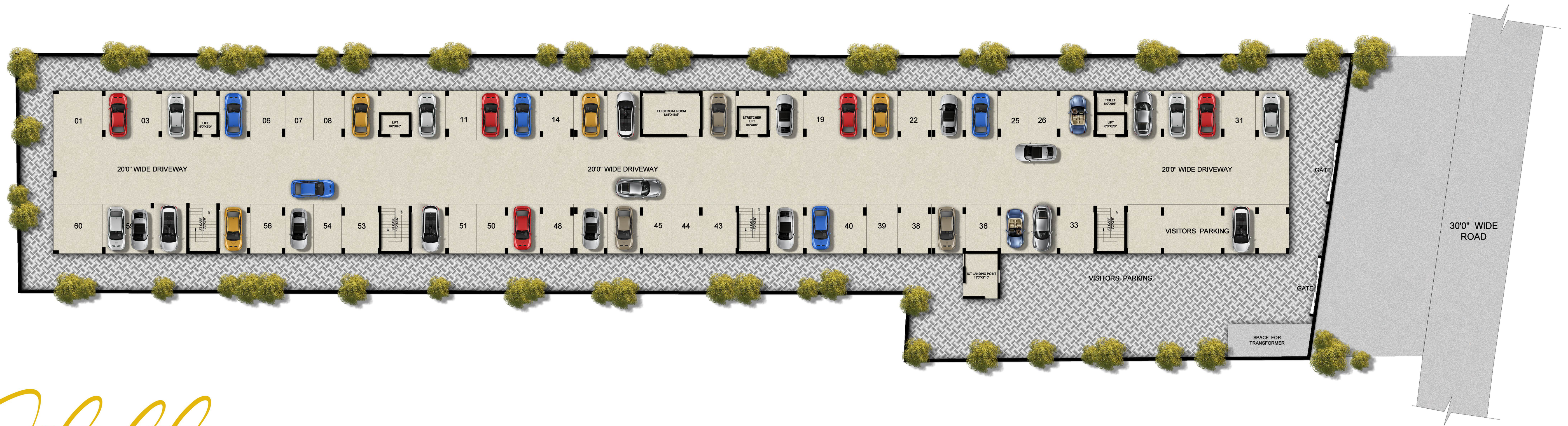
Granite step tiles on the staircase/Lobby, Premium vitrified tiles in the flat area – Heavy Duty anti-skid tiles external driveways.

BALCONIES

Decorative MS railings.

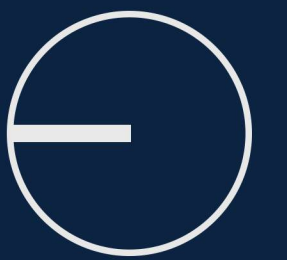


*Images are for illustrative purposes only.



Still FLOOR PLAN

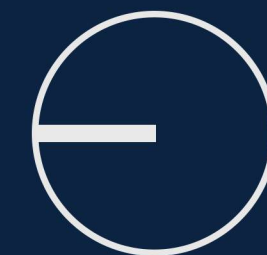
Experience the effortless convenience of our meticulously planned parking amenities, where your vehicle and bicycle are provided a sanctuary in a setting that's not only functional but also exceptionally comfortable. Our dedication to your accessibility extends beyond parking; with strategically positioned stairs and elevators, each stride towards enhanced living is seamlessly convenient.





First FLOOR PLAN

With meticulously crafted spaces and thoughtful design, our residences redefine the standards of comfortable living, ensuring that every moment spent here is imbued with tranquility and elegance. Experience the epitome of affordable luxury living at Chinatamani Residency, where every detail is curated to elevate your living experience.



Flat Details

3BHK

BUILT UP AREA = 1173 SFT.

CARPET AREA INCLUDING BALCONY = 1073 SFT.

BALCONY AND UTILITY AREA = 122 SFT.

SUPER BUILT UP AREA = 1497 SFT.



"Embrace the comfort of home, where every corner tells a story. In a 3 BHK apartment, find the perfect blend of space, warmth, and possibility."

Three Dimensional View of a Typical Flat

More details for site visit and booking



+91-94390 47299