



**WE TAKE PLEASURE
in informing you about
SHREE ENCLAVE**

Near CIFA/KEC Bhubaneswar

**An exclusive Ten Duplex lifestyle Project. The
future holds something incredible for you. And
we'd like you to be one of the first to see it. Join
the exclusive club, come be a part of us.**

BBSR-PURI NH SIDE DUPLEX AT GUDIAPOKHARI

250MTR FROM NH

NEAR KEC COLLEGE / ADITYA HYUNDAI

EUROPEAN VILLA DESIGN

PAVERS ROADS / CONCRETE ROADS

GATED SOCIETY

LOAN FACILITY AVAILABLE FROM LICHFL / SBI

STREET LIGHTS

COMMON DRAINAGE

SECURITY

CC TV CAMERA

COMMON BOREWELL FACILITY

RAIN WATER HARVESTING

SECURITY GUARD

PAVED GARDEN PATCH



NORTH FACING UNIT



GROUND FLOOR PLAN



FIRST FLOOR PLAN

🏠 FIRST FLOOR

ENHANCED LIVING EXPERIENCE

EAST FACING UNIT

SECOND FLOOR

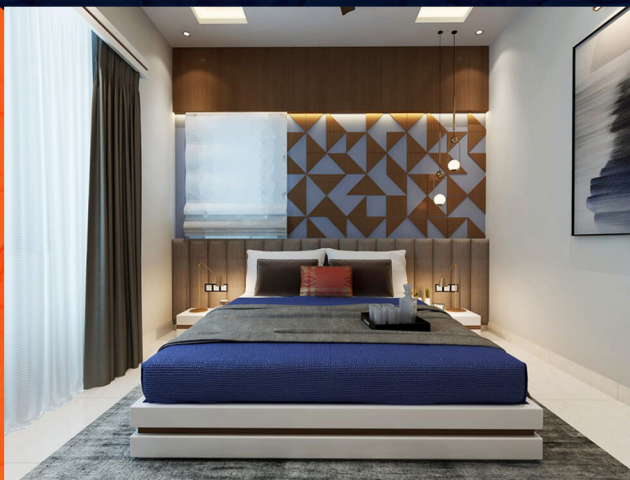


GROUND FLOOR PLAN

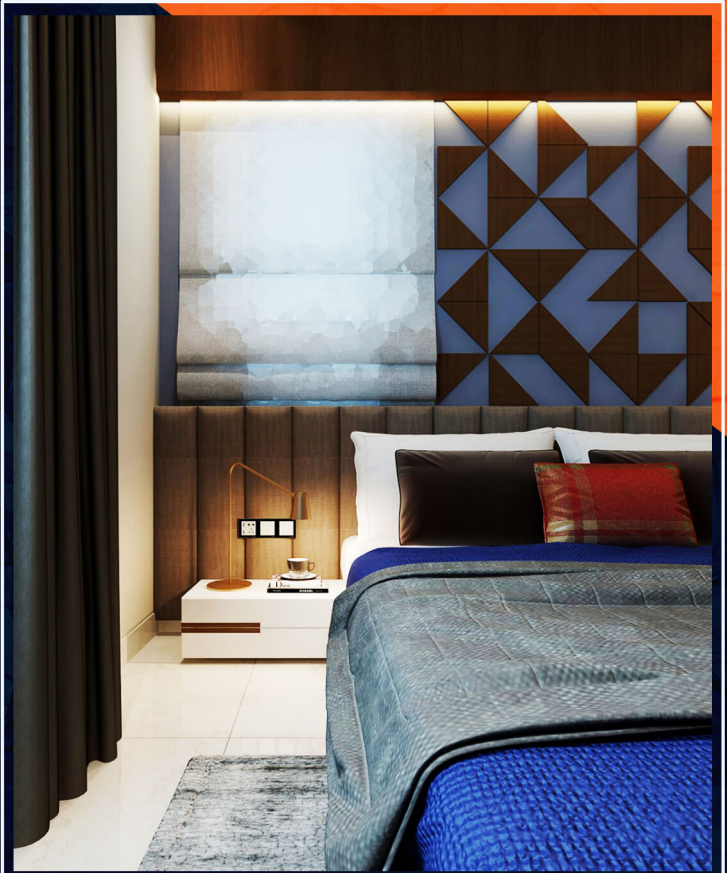


FIRST FLOOR PLAN

IMMACULATE DESIGN



ROOM PLAN



DUPLEX SPECIFICATION –

SHREE ENCLAVE

1 STRUCTURE - RCC frame structure.

- Solid concrete block masonry.

2 PLASTERING - All internal walls are smoothly plastered

- All external sponge plastered

3 PAINTING - INTERIOR: Superior Quality Interior Plastic Emulsion Paint.

- EXTERIOR: Weather Proof Exterior Emulsion or other equivalent solution as per elevation features.

4 FLOORING - Premium Vitrified 4 x 2 flooring Tiles for living, dining and family areas.

- MASTER BEDROOM - Premium Ceramic wooden Tiles flooring.
- OTHER BEDROOMS - Premium Ceramic wooden Tiles flooring.
- KITCHEN - Vitrified or equivalent flooring.
- UTILITY AND BALCONY - Antiskid ceramic flooring and wall dadoing.
- MASTER BEDROOM TOILET - Antiskid ceramic flooring and wall dadoing.
- OTHER BEDROOM TOILETS – Antiskid Ceramic tiles / vitrified or equivalent for flooring and cladding.

5 TOILET - All Sanitary wares shall be from American Standard / Jaguar or of equivalent make.

6 PLUMBING - All water supply lines of CPVC or equivalent.

- Individual OHT provision for villas.
- Plumbing piping provision for solar water in all toilets.
- PVC sewer lines.

7 DOORS & WINDOWS - Main door - Solid teak wood door frame with panelled teak wood door shutter.

- Other room doors -

Good quality chrome finish hardware.

Panel Shutters for bedrooms and toilets.

- Windows : Wooden or UPVC

8 Kitchen / Utility

- Provision for electrical & plumbing points.

- Granite platform with double bowl stainless steel sink of reputed make.

- Cladding up to 2 ft above cooking platform in kitchen with ceramic tiles

- Provision for water purifier and freeze point in kitchen.

- Provision for washing machine, dryer and dishwasher in utility.

- Stainless steel double bowl sink.

9 Electrical

- One TV point in the living room and in all bedrooms.

- Fire resistant electrical wires of Finolex/Anchor/ Great White make or equivalent.

- Branded modular switches.

- Miniature circuit Breaker(MCB) for each room provided at the main distribution box within each villa.

- For safety, one Earth Leakage Circuit Breaker (ELCB) for the villas.

- Telephone - points in living room and family room.

- Provision for internet points

10 AC Provision

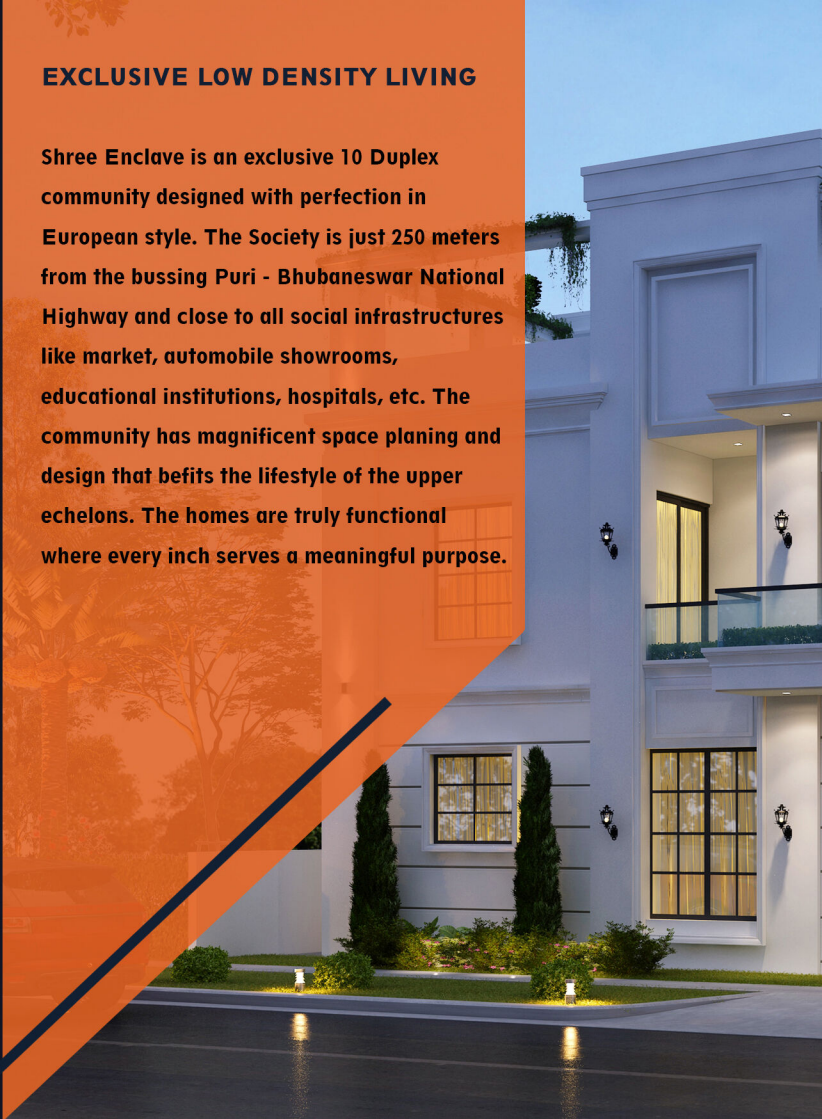
- All Bedrooms and Living Room

11 Inverter

- Inverter Provision in all houses

EXCLUSIVE LOW DENSITY LIVING

Shree Enclave is an exclusive 10 Duplex community designed with perfection in European style. The Society is just 250 meters from the bustling Puri - Bhubaneswar National Highway and close to all social infrastructures like market, automobile showrooms, educational institutions, hospitals, etc. The community has magnificent space planning and design that befits the lifestyle of the upper echelons. The homes are truly functional where every inch serves a meaningful purpose.





COMMON UTILITIES

Compounded and Secured Community with Security.

Combined cobble-stone, concrete asphalt /paver block driveways with green cover on either side of the driveway.

Covered Storm Water Drains.

Street Lights with adequate common area lighting.