

Developer :



Mahima Infracon Pvt. Ltd.

Plot No. 03, Samanta vihar,
Near Kalinga Hospital Square
Chandrasekharapur, Bhubaneswar-751015
Cell : +91 9439047299

Architect :



**SAURASTRA DAS
CONSULTANTS**
300, Kharavel Nagar, Bhubaneswar
Tel. : 0674 - 2392681

Disclaimer : The Sizes / Shapes / Positions of openings, ducts, balconies and landscape are subject to change. Room sizes indicated are structural sizes and actual sizes may vary due to finishes. Area mentioned are subject to change after finalization of services and structural design. The furniture shown in the illustration is only indicative.

All plans, specification, artistic rendering and images as shown in this brochure are only indicative and are subject to change as may be decided by the company or directed by any competent authority in the best interests of the development. Soft furnishing, furniture and gadgets do not form a part of the offering. This document is conceptual and not a legal offering by the Company and is to be used for general information only. Any interested party should verify all the information including designs, plans, specifications, facilities, features, payment schedules, terms of sales etc independently with the Company prior to concluding any decision for buying in any of the towers. The user of the Brochure confirms that he / she has not solely relied on this information for making any booking / purchase in any of the towers. Nothing on the brochure should be misconstrued as advertising, marketing, booking, selling or an offer for sale or invitation to purchase a unit in any project by the Company.

Nothing contained herein intends to constitute a legal offering on the Company's part. Information herein may contain technical inaccuracies or typographical errors. All images (other than actual images) are merely artistic conceptualization and should not be relied upon as definitive reference. Netra Galaxy is registered with the Odisha Real Estate Regulatory Authority vide Project Registration Number RP/07/2022/00795 dt. 20/10/2022





WELCOME TO
A WORLD OF CONTEMPORARY LUXURY LIVING



NATURE'S BEAUTIFUL BOUNTY

A project that offers you natural green recreation to delight, to enlighten and to inspire. Simply put, it's nature's beautiful bounty at your service.

mahima
GREENEX

This is a Landmark project having 2 & 3 bedroom condominiums, which give you the best of both worlds; a location with perfect connectivity and a resort-like lifestyle- at a price that's simply superb!

Mahima Greenex close to NH-16, Puri Canal, Hanspal, amid acres of dotted greenery, this project blends seamlessly into the natural topography with it's futuristic architecture and innovative construction design. Get ready for a resort-like ambience combined with the best of natural embellishments.

Call it a curative nature retreat, a country home, or a Villament style apartment project and you are up for surprises. Embrace freedom. Say hello to good life.

**NOT FOR ANYONE.
NOR FOR EVERYONE**

**mahima
GREENEX
BLOCK-A**



for those who have arrived

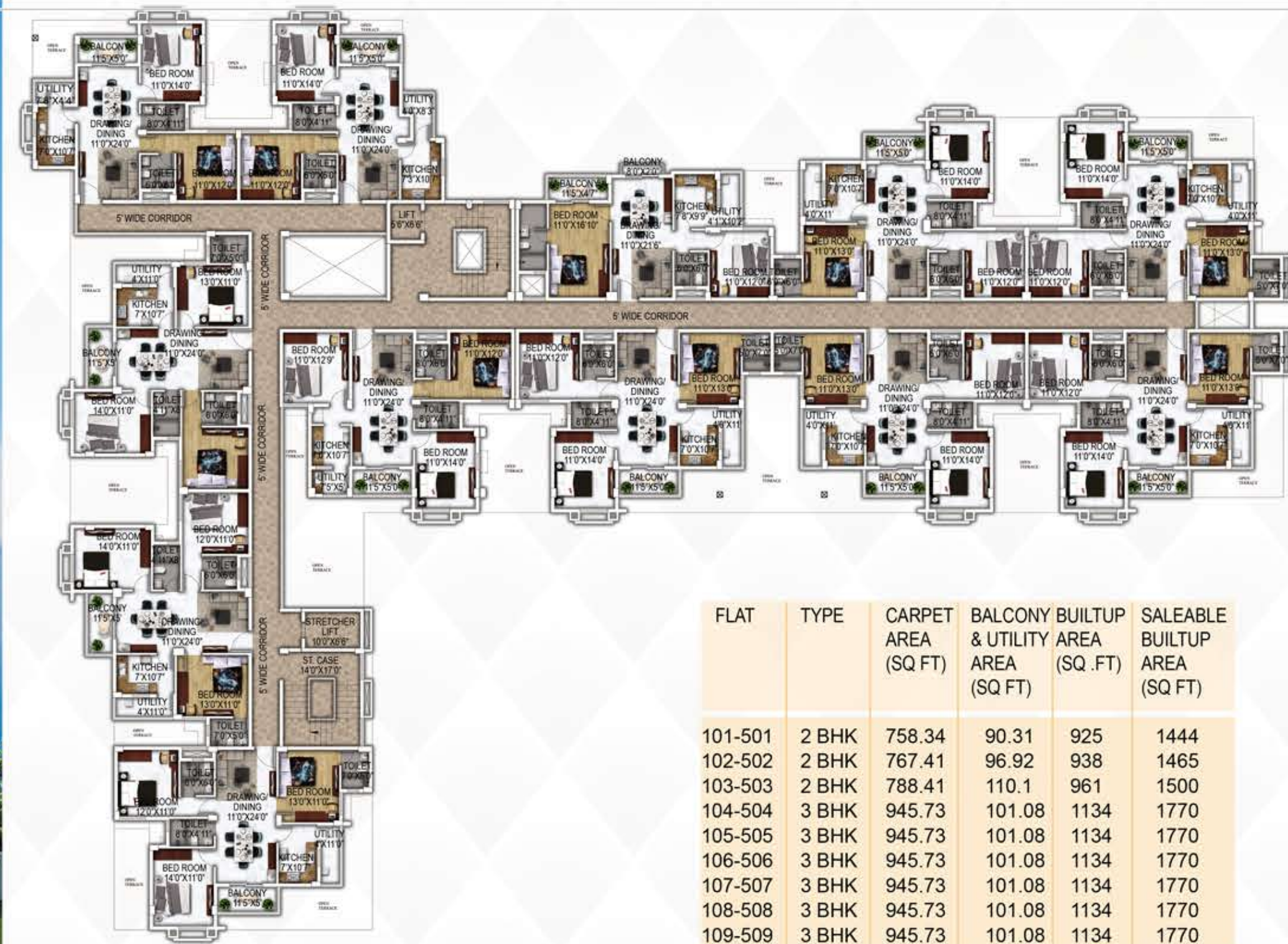
It is only a handful who have made it on all fronts in their lives. These handful people demand the best of best in everything and from everyone, including themselves. It is no small feat to meet their demanding standards. Others have to rise up in delivering those standards. We, at Mahima Greenex highly competent in meeting these demanding standards. With a past of catering to creme-de-la-creme of Bhubaneswar clientele, we are in the right position to design, develop and deliver..

BLOCK A



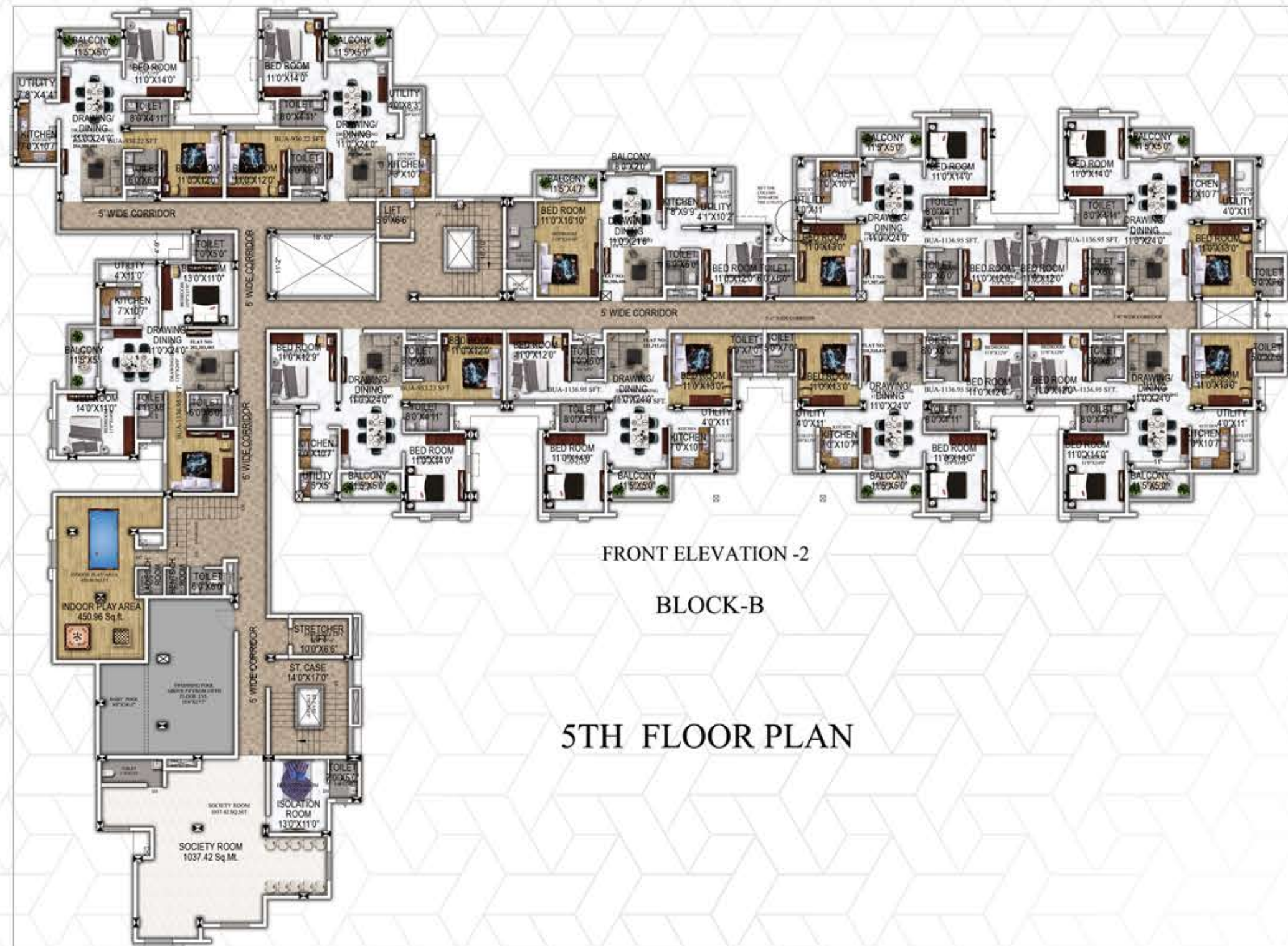
FLAT	TYPE	CARPET AREA (SQ. FT)	BALCONY & UTILITY AREA (SQ. FT)	BUILTUP AREA (SQ. FT)	SALEABLE BUILTUP AREA (SQ. FT)
101-501	3 BHK	945.73	101.08	1134	1770
102-502	3 BHK	945.73	101.08	1134	1770
103-503	3 BHK	945.73	101.08	1134	1770
104-504	3 BHK	945.73	101.08	1134	1770
105-505	3 BHK	945.73	101.08	1134	1770
106-506	3 BHK	945.73	101.08	1134	1770
107-507	3 BHK	945.73	101.08	1134	1770
108-508	3 BHK	945.73	101.08	1134	1770
109-509	3 BHK	945.73	101.08	1134	1770

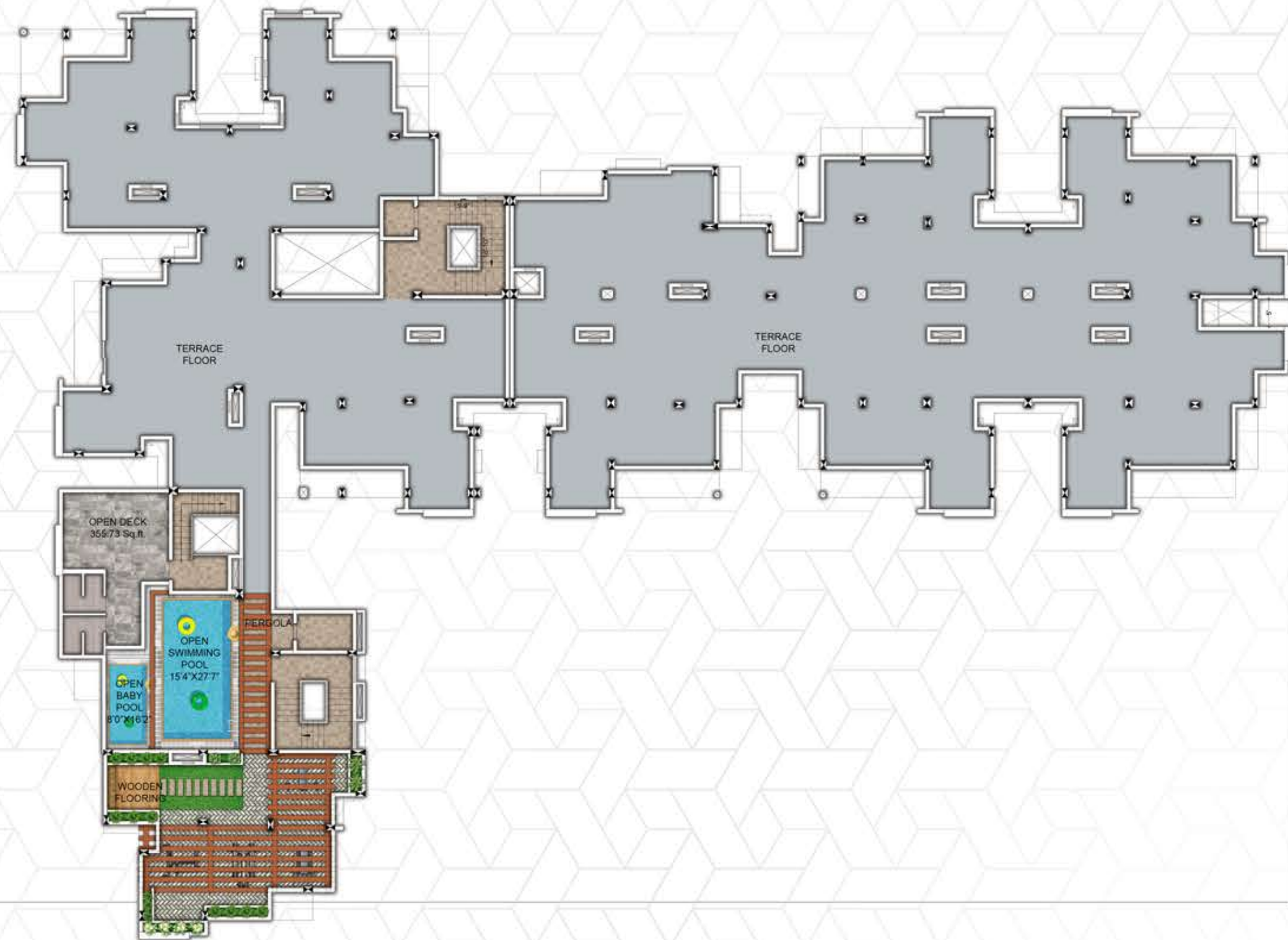
mahima
GREENEX
BLOCK-B





Looking for a perfect blend of location advantages and city lifestyle ? Well, look no further! New Castle offers you all the benefits that urban life has to offer or even something more! A perfect place to call home. Your home.





WE DON'T JUST
SELL HOMES.
**WE CREATE
LIFESTYLES!**

#AliveStyle

ELITE Features

- Round the clock security
- 24*7 water supply through submersible pump.
- 100% Power backup for common areas & 1 No of Lift for each Block 500 watts of backup to each flat.
- 24*7 security surveillance through CCTV.
- Intercom system.
- Sewerage Treatment Plant
- Rooftop Solar energy system
- Rain water harvesting System
- Fire fighting systems as per NBC norms.
- EV charging points.





Amenities

Relax, Rejuvenate & Breathe
(Roof top & Fifth Floor)

- Indoor Kid's Play Area
- Swimming pool with Baby Pool
- Pool Deck & Changing Room
- Meditation & Yoga space on roof top
- Open Gym
- Senior Citizen's Sit-out
- Lush green landscaping
- House Owner's Society office & Assembly



PROJECT Specification

FOUNDATION

- ◆ RCC Framed Earthquake Resistant Structure with Vizag/SAIL/TATA or Equivalent make.

SUPER STRUCTURE

- ◆ RCC Structure of Column Beams, Lintel and Slabs with M20 Grade Concrete.

WALLS

- ◆ All Brick work shall of AAC block / Fly ash with plastering both outside and inside 1:6 proportions.

DOORS

- ◆ Door Frame (Choukath) – Sal wood/WPC.
- ◆ Main Door - Teak door with Handle lock of Godrej/Dorset make.
- ◆ Internal Doors - 32 mm Factory made flush Doors with Laminated with Morteg lock of Godrej/Dorset Make.

WINDOWS

- ◆ UPVC Windows with glass panel & Safety MS. Grill.

PAINTING

- ◆ Internal walls finished with wall putty (JK / ICI Dulux / Asian or Equivalent make) & Acrylic emulsion paint of 2 coats (JK / ICI Dulux / Asian or Equivalent make).
- ◆ External walls finished with weather coat paint of 2 coats (JK / ICI Dulux / Asian or Equivalent make) over one coat of primer.

FLOORING

- ◆ Drawing, Dining, Bed Room & Kitchen - 600 * 1200 mm Vitrified Tiles of Kajaria / Somany /RAK/ Equivalent Make.
- ◆ Toilets - Anti - skid ceramic floor tiles. Ceramic Wall tiles of 600 * 300 mm upto heights of 2100 mm with highlighter one line.
- ◆ Balcony - Anti - skid ceramic floor tiles.

KITCHEN

- ◆ Black Granite stone cooking platform with ceramic tiles with a dado up to 2.5ft height above the counter. Stainless steel kitchen sink.

TOILETS

- ◆ Branded CP & Sanitary fixtures of Jaguar/Hindware / CERA/ Equivalent Make and ISI mark.
- ◆ Provision for exhaust fan & geyser in all toilets.
- ◆ Wall mounted WCs in all toilets.

BALCONY

- ◆ Decorative & safety M.S / S.S railing.

STAIRCASE & CORRIDOR

- ◆ Staircase and Corridor with Granite and SS railing.

ELECTRICAL

- ◆ Concealed wiring of RR / Finolex / Polycab / Anchor / Equivalent make with DB/ MCB of Havells/Legrand/L&T make.

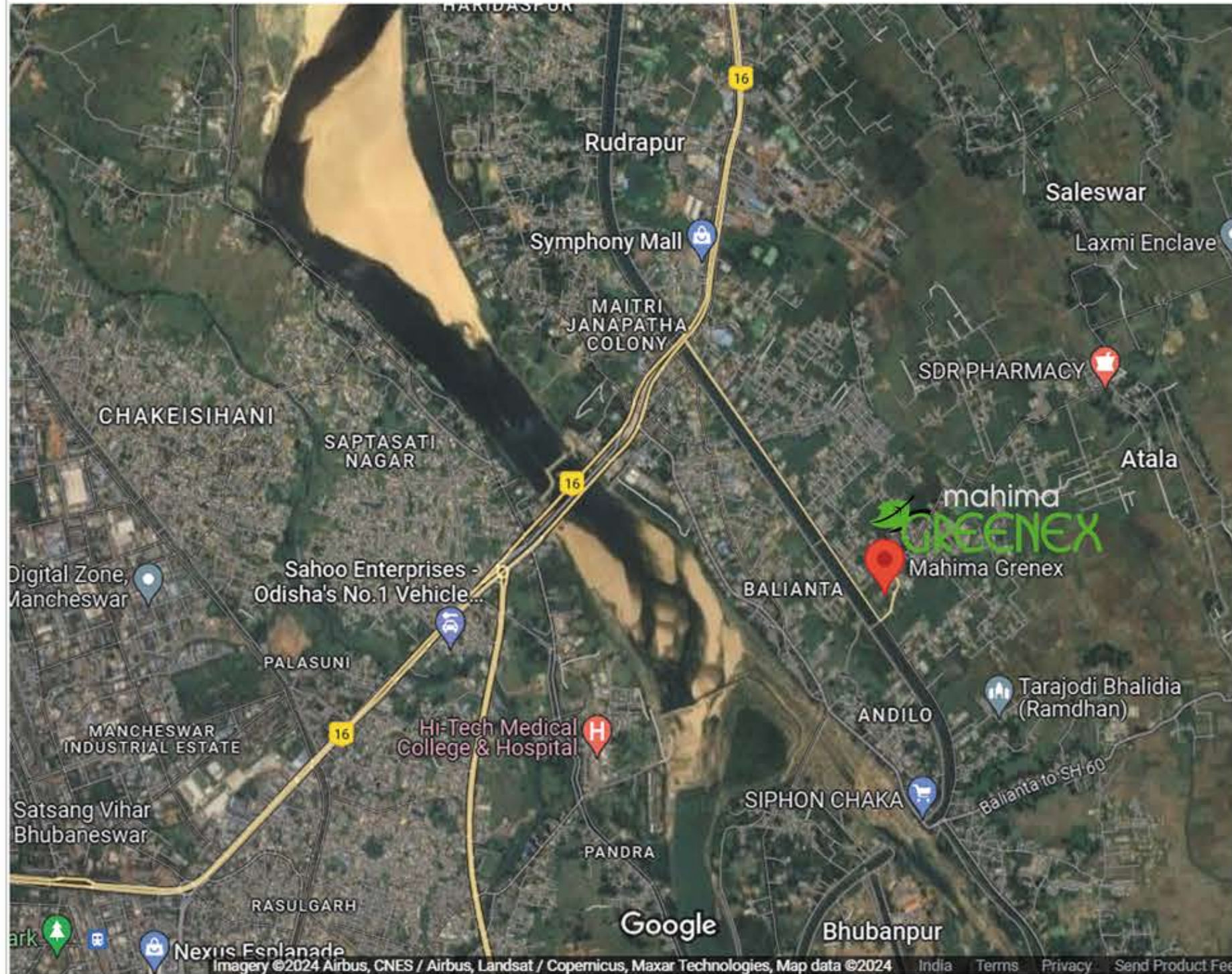
- ◆ Provision for AC, TV and telephone points.
- ◆ Modular electrical switches of Havells / Legrand/Roma Anchor / Equivalent make.

PARKING

- ◆ Vitrified Parking Tiles.

LIFT

- ◆ 8 passengers automated lifts and Stretcher lifts of KONE / OTIS / ECE or Equivalent make.



mahima **GREENEX**

"Mahima Greenex" located at Puri Canal adjacent to NH-16 & well connected to all the major landmarks having wide road access and very comfortable communication route.

- Close to Panda Cancer Hospital, Grand Bazaar, Decathlon and Reliance Petrol Pump.
- 10 min drive from SUM Hospital, Phulnakhara Square.
- 10 mins drive from Phulnakhara Square.
- 5 mins drive from Pal Heights Mantra and Pahala Square.
- 15 mins drive from DPS Kalinga School and Mothers Public School.
- 4 mins drive from Symphony Mall.
- 10 mins drive from Rasulgarh Square, Esplanade Mall.
- 25 mins drive from Bhubaneswar Railway Station.
- 30 mins drive from Biju Patnaik International Airport.

