



Lifestyle you dream

@ Satya nagar, Bhubaneswar



Welcome To a **Lifestyle** you dream

Crafting Spaces for Life and Growth

At the heart of everything we do is a simple belief — your home should reflect your aspirations. We offer carefully planned residential and commercial projects in prime locations, designed to enhance both lifestyle and investment value.

Our diverse portfolio features luxury apartments, stylish villas, and modern office spaces — all thoughtfully created to meet the evolving needs of today's families and businesses. With an unwavering commitment to quality, timely delivery, and customer satisfaction, we blend comfort, elegance, and sustainability into every square foot.

Whether you're a home buyer seeking a vibrant community or an investor looking for long-term returns, our developments are built to offer more than just property — they offer promise.

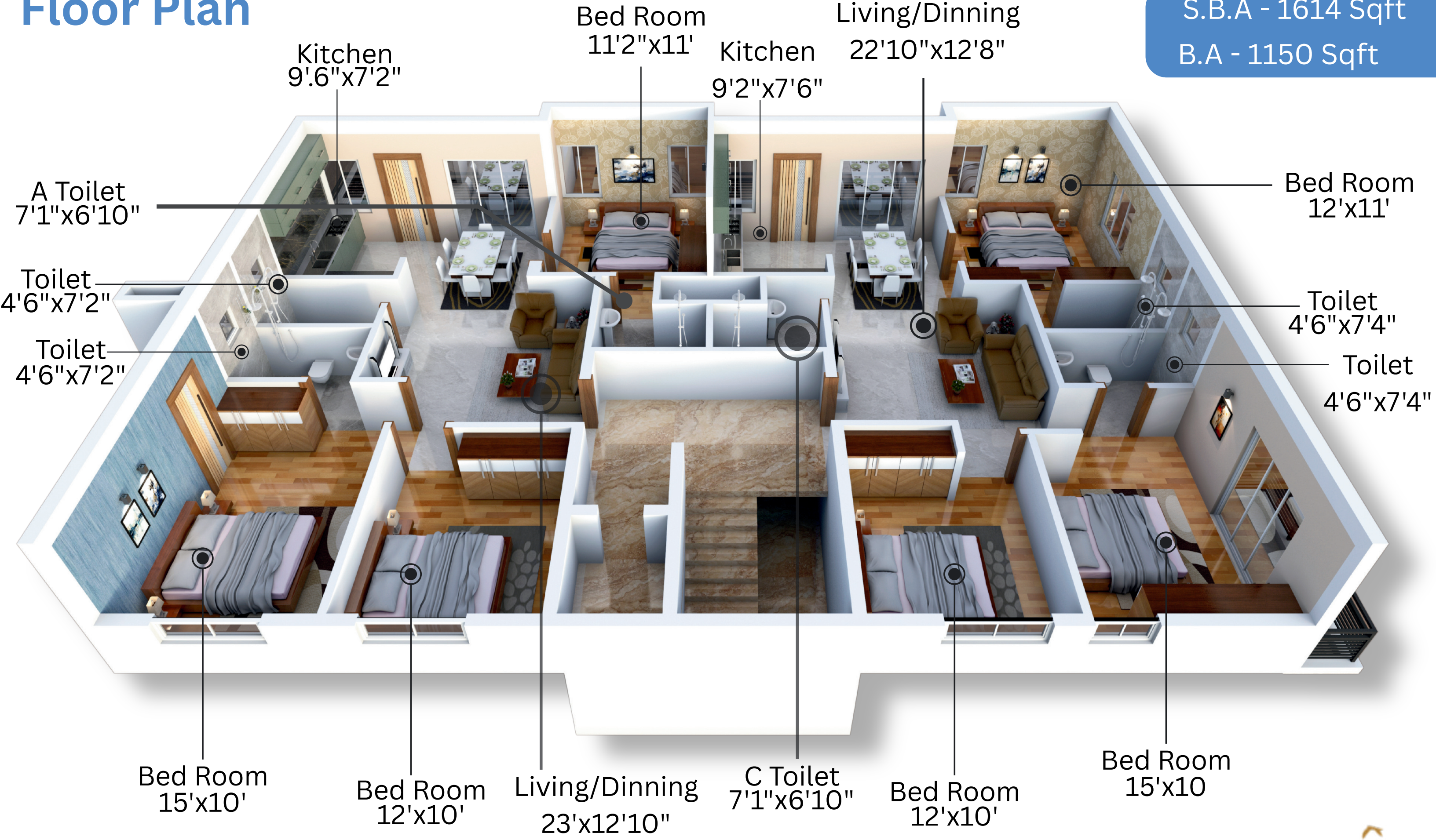


MAHODADHI MANOR

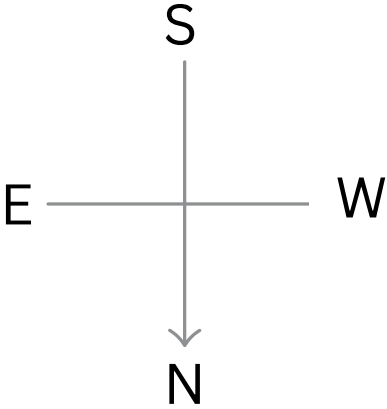
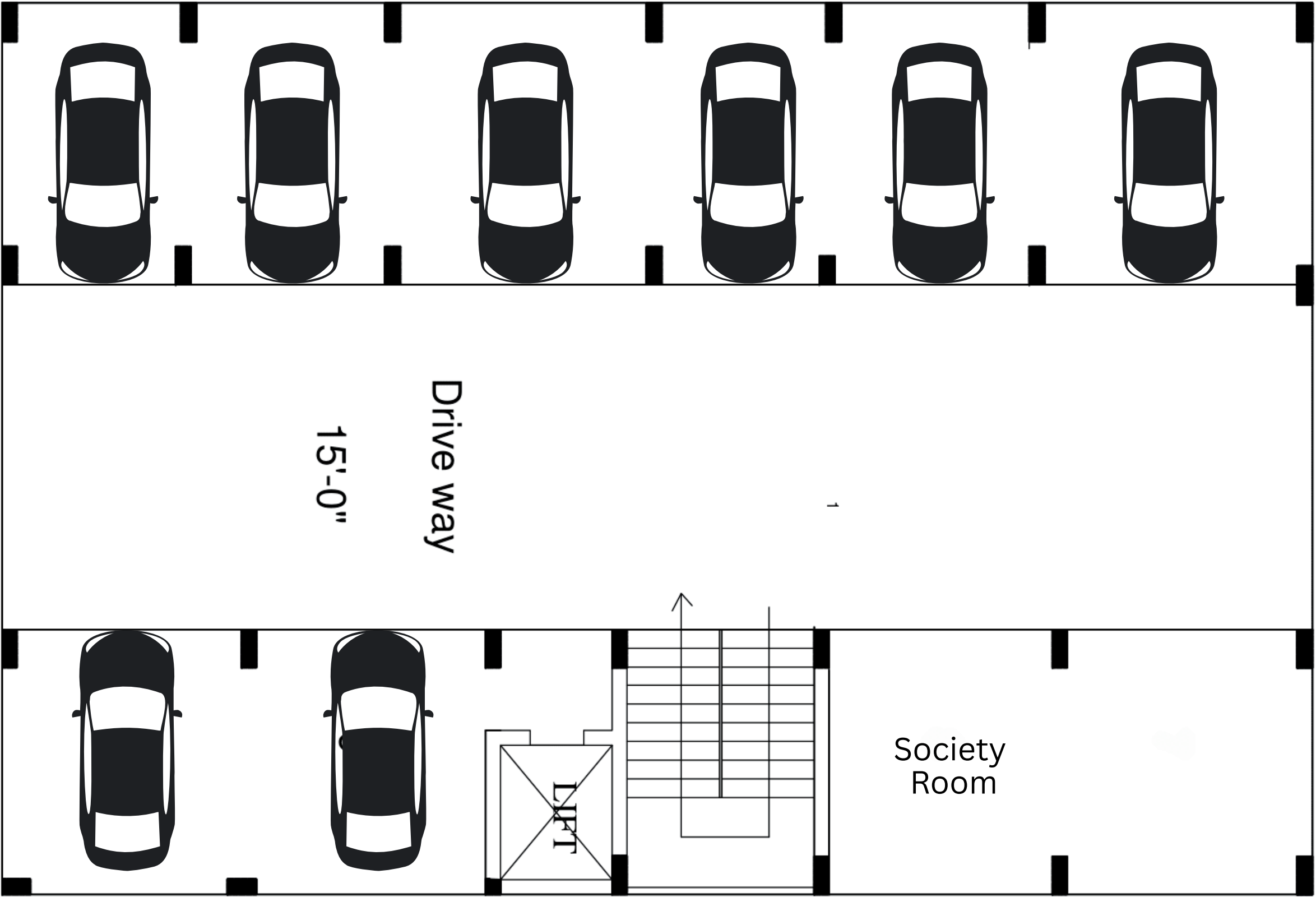


Floor Plan

S.B.A - 1614 Sqft
B.A - 1150 Sqft



Parking



Project Amenities

- Society Room
- Fire Fighting Equipment
- Stretcher Lift
- 24-Hour Water Supply
- 24x7 Security
- Cyclone/Earthquake Resistant Structure
- Car Parking Facilities
- Intercom with CCTV Surveillance
- Sliding Entrance Gate
- Electric Charging for EV Vehicle (Individual)
- STP and Rainwater Harvesting
- Children Playground



Specification

Foundation:

Foundation with R.C.C. Structure.

Walls :

AAC Block and plastering on walls. outside, weather-proof paint.

Flooring :

Vitrified tiles (6'x3') with mat finish, reputed brand with 4" dado.

Kitchen :

Modular kitchen with granite cooking top

Toilets :

Flooring(2'x2') of antiskid ceramic tiles, glazed wall tiles up to 7'-0" Height from the floor.

Ceramicware of a reputed brand and C.P. fitting of standard quality, using (ARK/Jaquar or Equivalent brand with a minimum 10 years warranty).

Doors :

Main door of well-designed flush door with veneer tick finish, with eye pipe, safety chain, and inside door will be a waterproof flush type with veneer polished WPC choukatha.

Windows :

UPVC windows with tempered glass panels and an iron grill.

Electrical:

Concealed wiring network of standard make and electrical fittings of standard quality, and switches of modular type (Anchor/Havels) with AC points in bedrooms and living.

Paints :

Weather coat paint on exterior and two coats of putty plastic paint interior.



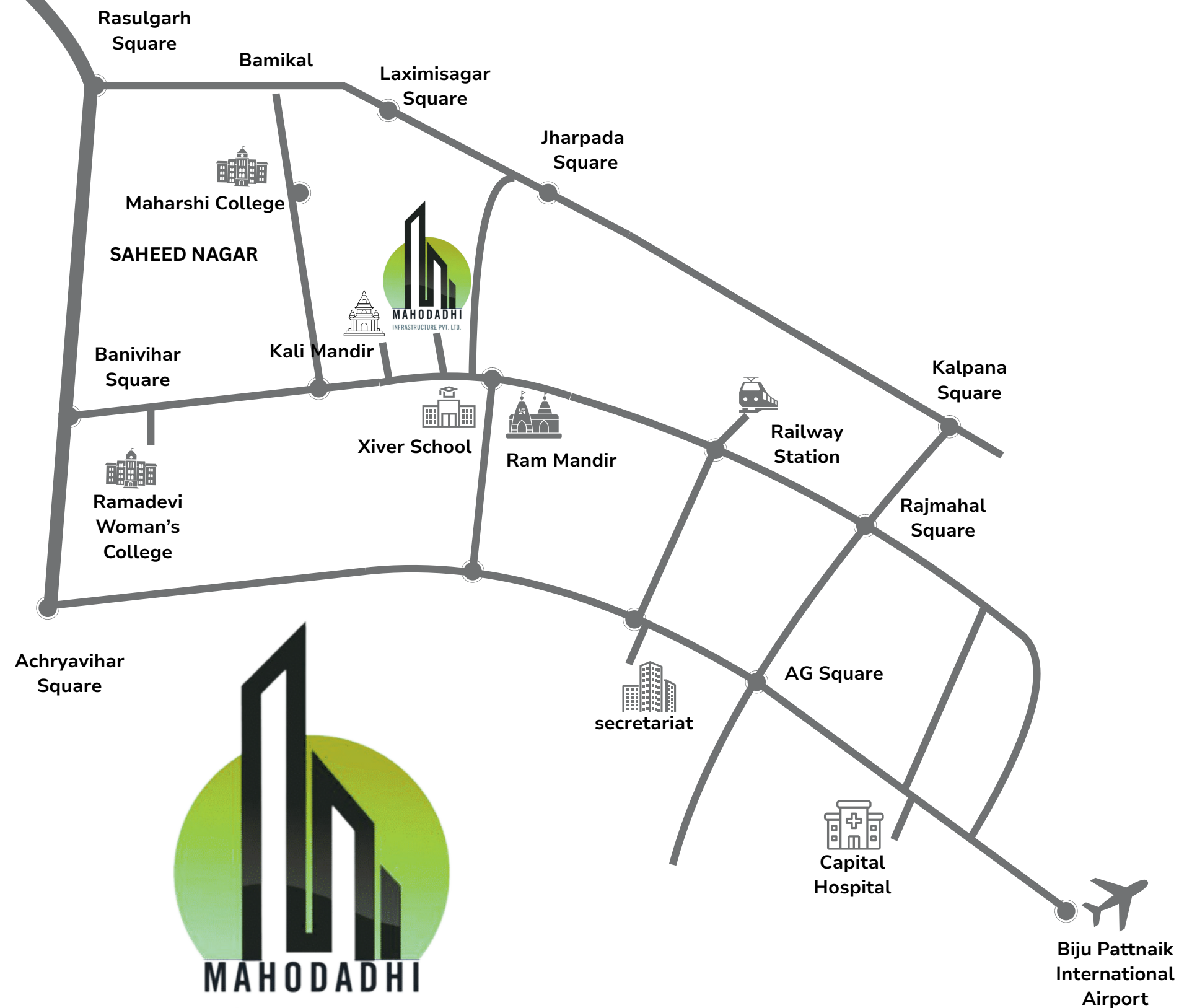
Payment Schedule

- | | |
|-----------------------------|-----|
| • At the time of booking | 10% |
| • Completion foundation | 20% |
| • Completion still floor | 10% |
| • Ground floor casting | 10% |
| • 1st floor roof casting | 10% |
| • 2nd floor roof casting | 10% |
| • 3rd floor roof casting | 10% |
| • Brickwork and plaster | 10% |
| • Flooring work of flats | 5% |
| • At the time of possession | 5% |



Location Map

-  Ram Mandir - 1 KM
-  Kali Mandir - 300 Mtr
-  Railway Station - 2 KM
-  Airport - 4 KM
-  Utkal University - 1.5 KM
-  Satya Nagar Park - 50 Mtr



For Booking Call us at +91-9040011888, +91-9090011888

